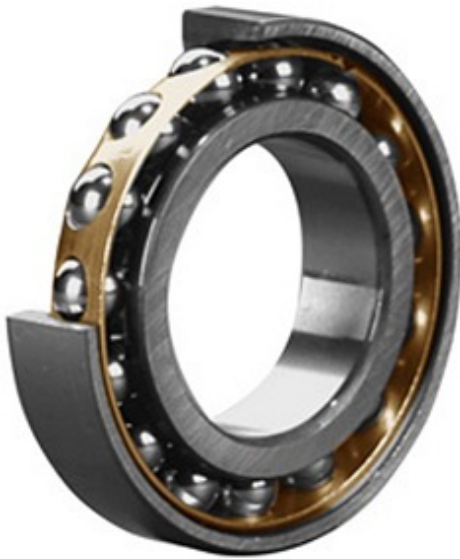




# NTN PRECISION AXLE CORP.



## 100 mm x 215 mm x 47 mm SKF 7320 BECBY Angular Contact Ball Bearings

Bearing No. 7320 BECBY

7320 BECBY Bearing 2D drawings and 3D CAD models

Category	Angular Contact Ball Bearings
Inventory	0.0
Manufacturer Name	SKF
Minimum Buy Quantity	N/A
Weight	7.16
EAN	7316576650987
Product Group	B00308
Enclosure	Open
Flush Ground	Yes
Rolling Element	Ball Bearing
Number of Rows of Balls	Single Row
Precision Class	ABEC 3   ISO P6
Maximum Capacity / Filling Slot	No
Snap Ring	No
Cage Material	Brass
Contact Angle	40 Degree
Internal Clearance	CB
Number of Bearings	1 (Single)
Mounting Arrangement	Universal
Inch - Metric	Metric
Long Description	100MM Bore; 215MM Outside Diameter; 47MM Width; Open; Yes Flush Ground; Ball Bearing; Single Row of Balls; ABEC 3   ISO P6; No Filling Slot; No Snap



## NTN PRECISION AXLE CORP.

	Ring
Other Features	Normal Axial Internal Clearance
Category	Angular Contact Ball Bearing
UNSPSC	31171531
Harmonized Tariff Code	8482.10.50.28
Noun	Bearing
Keyword String	Angular Contact
Manufacturer URL	<a href="http://www.skf.com">http://www.skf.com</a>
Manufacturer Item Number	7320 BECBY
Weight / LBS	15.759
B	1.85 Inch   47 Millimeter
d	3.937 Inch   100 Millimeter
D	8.465 Inch   215 Millimeter
bore diameter:	100 mm
radial static load capacity:	190 kN
outside diameter:	215 mm
cage material:	Brass
overall width:	47 mm
outer ring width:	47 mm
contact angle:	40 °
maximum rpm:	3600 RPM
row type & fill slot:	Single-Row Non-Fill Slot
finish/coating:	Uncoated
internal clearance:	C0
precision rating:	ABEC 3 (ISO Class 6)
closure type:	Open
fillet radius:	2.5 mm
radial dynamic load capacity:	203 kN
series:	73
d	100 mm



## NTN PRECISION AXLE CORP.

D	215 mm
B	47 mm
d <sub>1</sub>	144.5 mm
d <sub>2</sub>	120.46 mm
D <sub>1</sub>	173.75 mm
a	90 mm
r <sub>1,2</sub> min.	3 mm
r <sub>3,4</sub> min.	1.1 mm
d <sub>a</sub> min.	114 mm
D <sub>a</sub> max.	201 mm
D <sub>b</sub> max.	208 mm
r <sub>a</sub> max.	2.5 mm
r <sub>b</sub> max.	1 mm
Basic dynamic load rating C	216 kN
Basic static load rating C <sub>0</sub>	208 kN
Fatigue load limit P <sub>u</sub>	6.95 kN
Reference speed	3800 r/min
Limiting speed	4000 r/min
Calculation factor A	0.63
Calculation factor k <sub>r</sub>	0.1
Calculation factor e	1.14
Calculation factor X	0.35
Calculation factor Y <sub>0</sub>	0.26
Calculation factor Y <sub>2</sub>	0.57
Calculation factor X	0.57
Calculation factor Y <sub>0</sub>	0.52
Calculation factor Y <sub>1</sub>	0.55
Calculation factor Y <sub>2</sub>	0.93
Mass bearing	7.5 kg